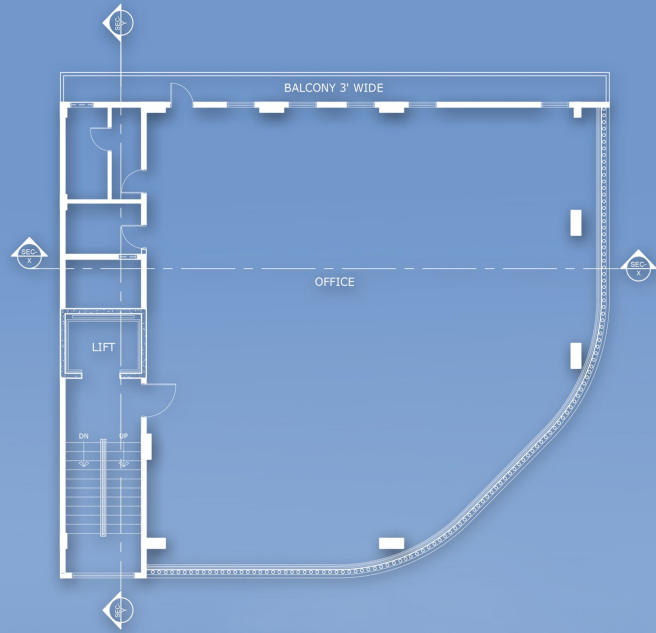


254 SQ.YD. COMMERCIAL PROJECT.

DESIGN PHILOSOPHY.

This corner building accommodates retail spaces on the ground floor whilst the higher floors stand for corporate offices. Moreover, the exterior facade exhibits an amalgamation of glass cladded with aluminum ribs - creating a visual rhythm with its artistic cuts and joinery.



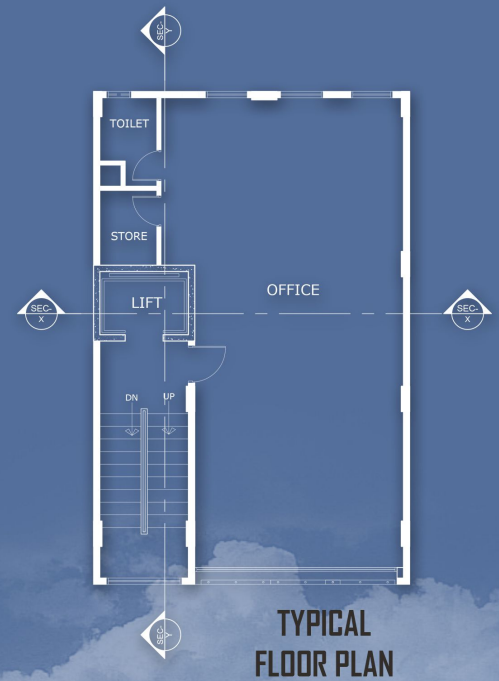
TYPICAL FLOOR PLAN



100 SQ.YD. COMMERCIAL PROJECT.

DESIGN PHILOSOPHY.

A dynamic 480 SQM commercial building that harmonizes the indoors and outdoors. It embodies #LandscapePLC green building standards making the design 'eco-friendly' - inspired by extensive use of natural light, gravity of wind and water conservation, this vertical mass will rejuvenate the outlook of DHA PH. VI Khy-e-Muslim Avenue.



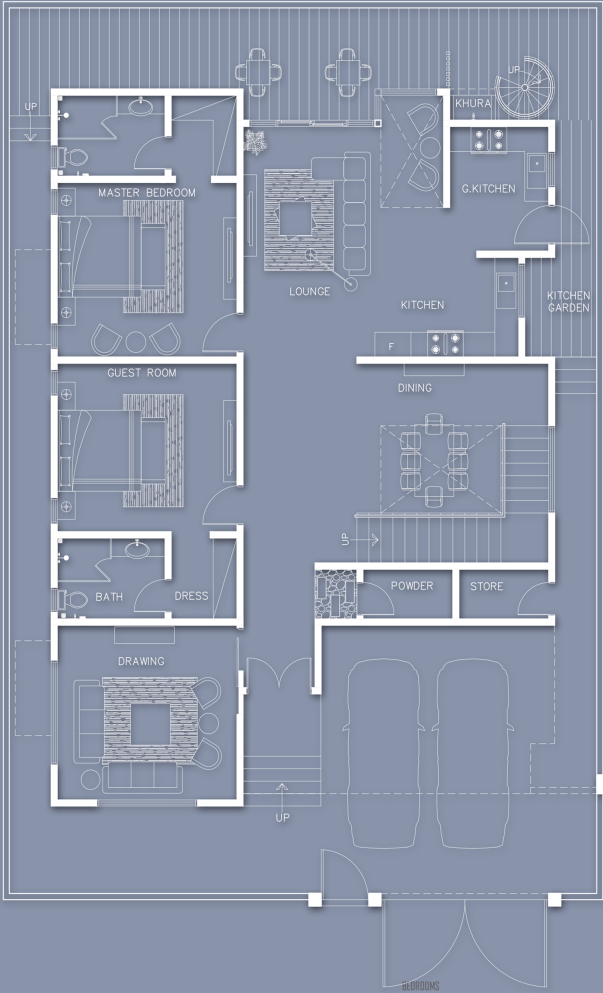
500 SQ.YD RESIDENTIAL PROJECT.

DESIGN PHILOSOPHY

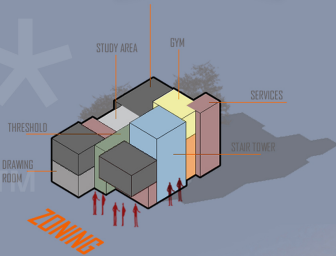
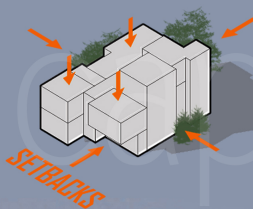
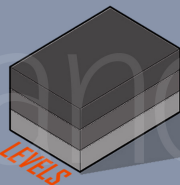
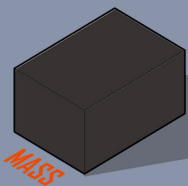
The concept for the residential project is to have a strong relationship with the indoor and outdoor spaces so as to connect with nature and to make sure that the house breathes.

The entrance of the house possesses a very strong axis towards the lounge which further stretches to the wooden deck with a tree. Furthermore, the lounge is related with the sitting area which is a double height space creating a dynamic effect of natural light from the screen.

Additionally, the same language is followed on the upper level with some more dynamism in the study area relat-

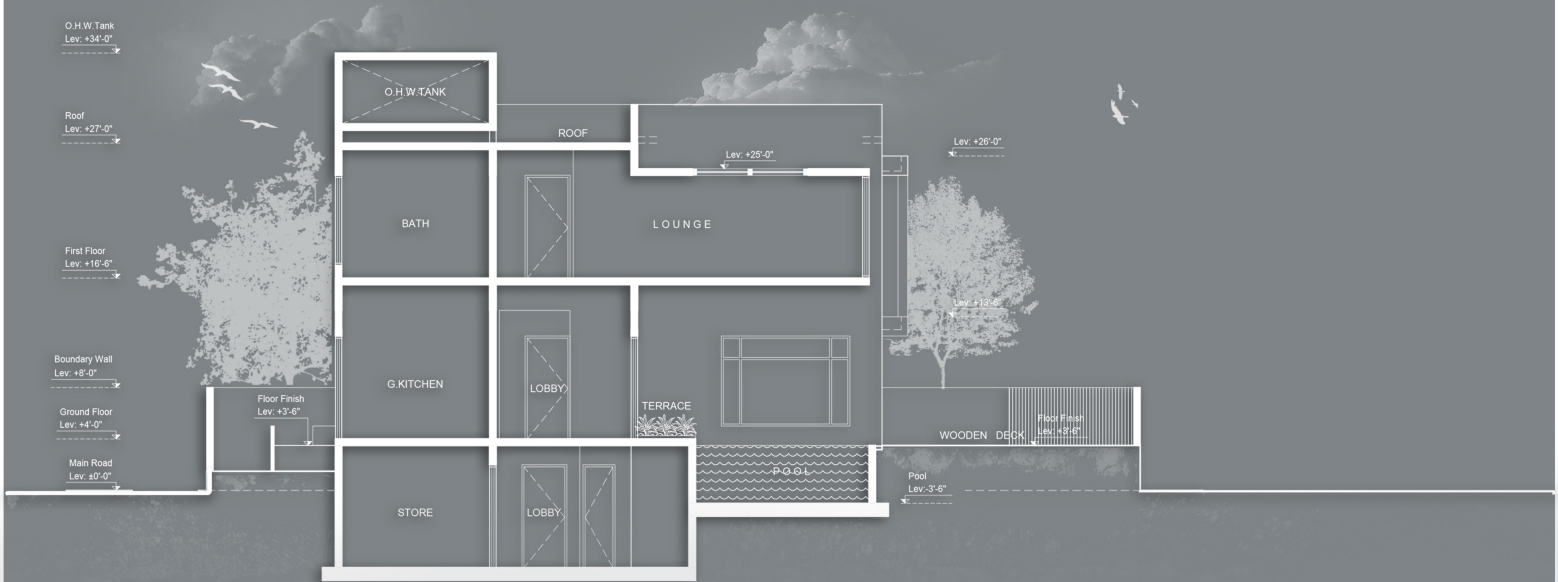


PROCESS FLOW



1000 SQ.YD. RESIDENTIAL PROJECT.

The project is designed on straight modern lines. The mass stretches longitudinally along the space creating a linear typology. It is built upon the basement with an emerging ramp for parked vehicles. Moreover, wide full length windows and open to sky terraces creates a dynamism between the indoor and outdoor spaces.



Landscape*



Landscape*